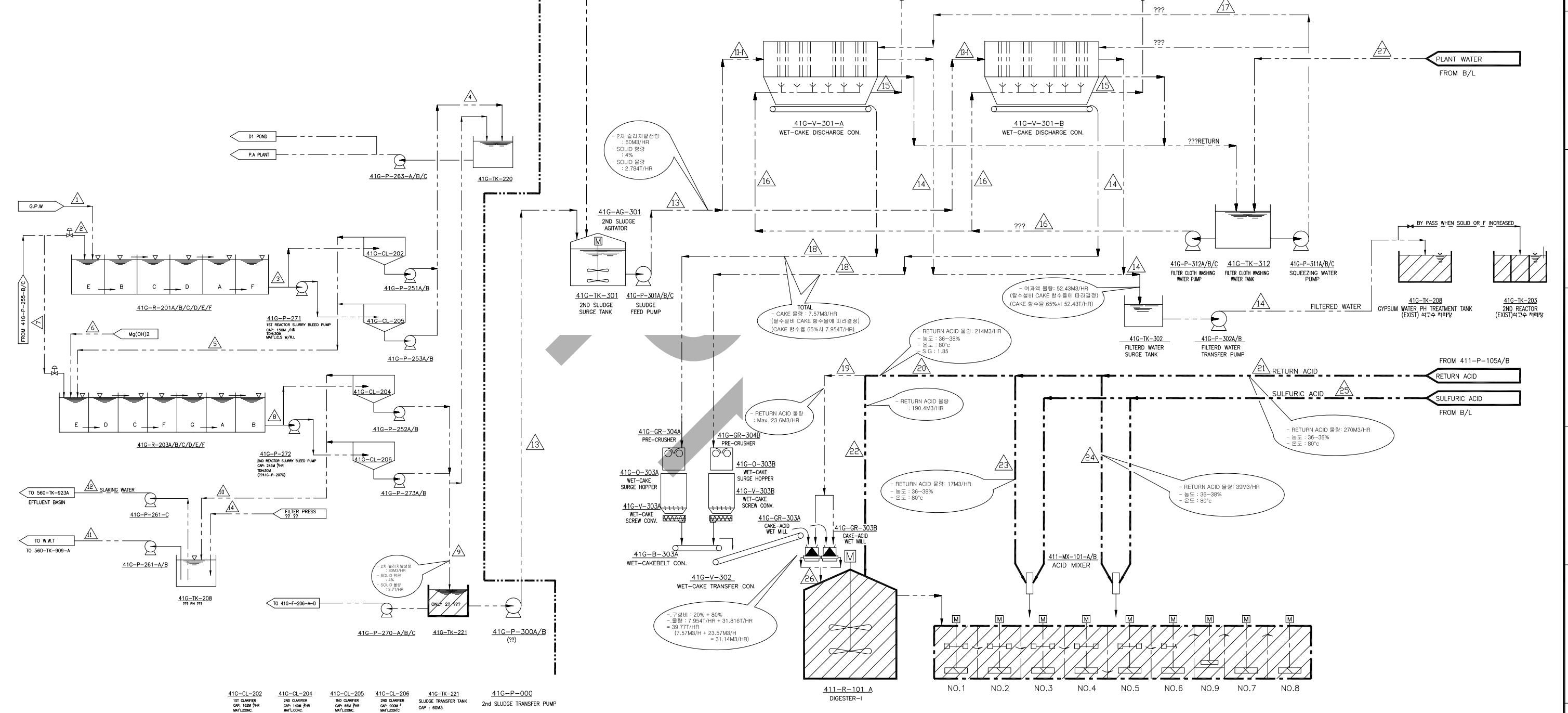


- 석고수 2차 슬러지내 SOLID 함량 : 4%
 - 석고수 2차 슬러지내 SOLID 몰량 : 2.784T/HR(S.G : 1.16)
 - WET-CAKE 몰량 : 7.954T/HR (= 2.784T/HR(SOLID) - 0.35T (7.57M3/HR))
 - 탈수여액 몰량 : 52.43T/HR (= 60.384T/HR - 7.954T/HR) (52.43M3/HR)

60M3/HR = 4% SOLID + 96% WATER
 = 2.784T/HR + 57.6T/HR
 = 2.4M3/HR + 57.6M3/HR
 = 60.384T/HR



41G-CL-202 1st Clarifier CAP: 150M³ WFL: 100%
 41G-CL-204 2nd Clarifier CAP: 150M³ WFL: 100%
 41G-CL-205 1st Clarifier CAP: 150M³ WFL: 100%
 41G-CL-206 2nd Clarifier CAP: 150M³ WFL: 100%
 41G-TK-221 Sludge Transfer Tank CAP: 60M³
 41G-P-000 2nd Sludge Transfer Pump

G.P.W ??? ???? : ?? 100% ?? 250MT/HR (7,000MT/DAY) x 1.25 (10,000MT/DAY) = 416.7MT/HR

STREAM NO.	13	14	15	16	17	18	19	20	21	22	23	24	25	26	27
SERVICE	G.P.W	Co(OH) ₂	1st ?? SLUDGE	1st SLUDGE	1st ???	Mg(OH) ₂	Co(OH) ₂	2nd ?? SLUDGE	2nd SLUDGE	2nd ???	????	SLAKING WATER			
MASSFLOW (MT/HR)	359.4	57.3	416.7	99.0	317.8	2.6	5.2	325.6	78.1	371.5	266.1	52.1			
pH	10	8.0 ~ 9.0	4.5 ~ 5.5	4.5 ~ 5.5	4.5 ~ 5.5	8.0 ~ 9.0	8.0 ~ 9.0	8.0 ~ 9.0	8.0 ~ 9.0	8.0 ~ 9.0	8.0 ~ 9.0	8.0 ~ 9.0			
H ₂ PO ₄ (P ₂ O ₅)	1.70 (1.23)		1.40 (1.01)	3.63 (2.63)	0.70 (0.5)			0.70 (0.51)	2.73 (1.98)	400ppm (290ppm)					
H ₂ SiF ₆ (F)	1.30 (1.03)		1.12 (0.89)	4.70 (3.72)	50ppm (40ppm)			0.01	0.02	8ppm (6ppm)					
H ₂ SO ₄	1.00		0.83	2.54	0.30			0.32	0.38	0.2					
(%) T-N(ppmp)	300 ~ 500			250 ~ 400						150 ~ 250					
?	1.70		5.75	21.00	1.00			3.18	13.20	0.01					
H ₂ O	94.00	75.00	93.01	77.00	98.00	50.00	75.00	97.37	90.00	99.70					
SUSPENDED SOLID		25.0wt%	4.0wt%	15.0wt%	200ppm	50.0wt%	25.0wt%	4.0wt%	4.0wt%	200ppm					

STREAM NO.	13	14	15	16	17	18	19	20	21	22	23	24	25	26	27	
SERVICE	2nd SLUDGE	2nd SLUDGE	FILTERED WATER	WASHED WATER	CLEANING WATER	PRESSING WATER	WET-CAKE	RETURN ACID	RETURN ACID	RETURN ACID	RETURN ACID	RETURN ACID	RETURN ACID	SULFURIC ACID	CAKE-ACID SLURRY	PLANT WATER
MASSFLOW	60.4T/HR	30.2T/HR	52.43T/HR		30.2T/HR	3.9~5.16M3/1	3.79M3/HR	23.6M3/HR	21.4M3/HR	27.0M3/HR	190.4M3/HR	17M3/HR	39M3/HR	62.5M3/HR	31.14M3/HR	
VOLUMETRIC FLOW	60M3/HR	30M3/HR	52.43M3/HR		30M3/HR			3.79M3/HR	23.6M3/HR	21.4M3/HR	27.0M3/HR	190.4M3/HR	17M3/HR	39M3/HR	62.5M3/HR	31.14M3/HR
	S, SOLID 4%(S.G 1.16)	S, SOLID 4%(S.G 1.16)	???? = .		S, SOLID 4%(S.G 1.16)	PRESS : 15KG/CM2	SOLID : 1.39T/HR	?? : 36~38%	?? : 36~38%	?? : 36~38%	?? : 36~38%	?? : 36~38%	?? : 36~38%	?? : 36~38%	?? : 93%	WET-CAKE: 200WT (7.954T/HR 1.75M3/HR)
	SOLID ?? 2.784T/HR	SOLID ?? 1.392T/HR	???? ?? ~38~42mg/L		SOLID ?? 1.392T/HR		WATER : 2.59T/HR	?? : 80°C	?? : 80°C	?? : 80°C	?? : 80°C	?? : 80°C	?? : 80°C	?? : 80°C	?? : 40°C	RACID : 800WT (11.84T/HR 2.55M3/HR)
			?? = . 61~65mg/L					S.G : 1.35	S.G : 1.35	S.G : 1.35	S.G : 1.35	S.G : 1.35	S.G : 1.35	S.G : 1.35	S.G : 1.81	
			???? = . 0.8~1.72mg/L													
REMARK			?? 65% ?						?? ?							

NOTE
 [Symbol] : EXIST EQUIPMENT, PIPE, ETC

REV.	DATE	DESCRIPTION	DWG.	DESIGN	CHECK	APPD
0	2010.9.27			SYK	SYK	

TITLE

JOB NO.

DWG NO. FS-001

SCALE NS